

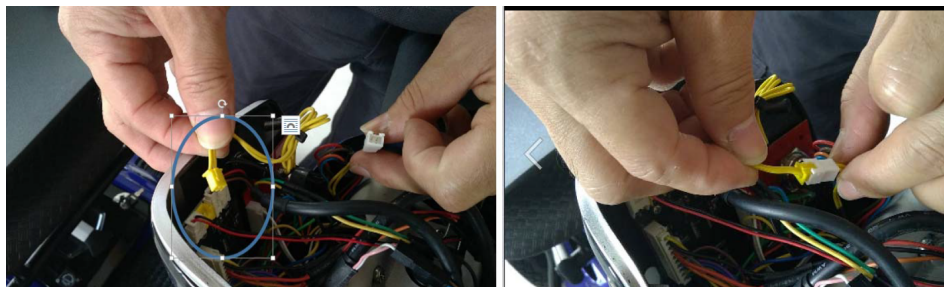
## Programming Autofold key fob

Open the upper panel shroud by removing the two Phillips screws (see photo)



Up-plug horn button from PCB (yellow connector) (see photo)

Re-connect the yellow plug into white plug (see photo)



Press the power button (it illuminates red) –see photo



Place key fob on power button then briefly press the green 'Horn' button once.  
Keep the key fob on the power button until you hear a beep and light will turn blue.



**Pairing/Duplication completed.**

Remember to unplug yellow plug from white plug, then plug yellow plug back into PCB and refit upper panel shroud.