

# INSTRUCTIONS FOR USE

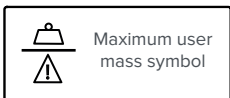
**⚠ WARNING:** To minimise the risk of injury from improper and unsafe use of this cane, read these instructions and safety precautions before using.

## Intended Purpose:

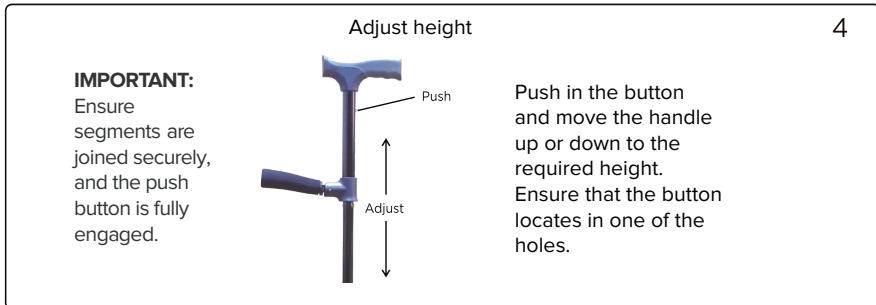
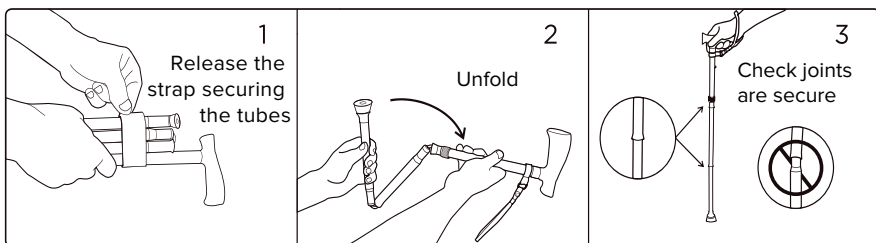
This cane is a walking aid to assist those who have reduced mobility.

## Safety Precautions:

- Consult a healthcare professional before using any assisted mobility device.
- Not to be used by persons heavier than the maximum user mass (see Specifications).
- Not intended to support the full weight of the user.
- Not intended for use on ice or other slippery surfaces as it has the potential to slip.
- Do not use unless individual segments are joined together securely, and the push button is fully engaged.
- When assembling individual segments, keep fingers away to avoid being pinched.
- Do not stretch the internal elastic cord more than necessary to assemble or disassemble the segments. Do not use the cane if the elastic cord is cut, frayed, or damaged.
- Applying downward pressure on the tip (e.g. stepping on the tip) while lifting the handle can cause the cane segments to separate and the cane to collapse, possibly causing the user to fall.
- Both handles must be held by the user for support, when standing up from a seated position.
- If the handles or tip becomes loose, or if the cane becomes damaged, stop using the cane immediately.

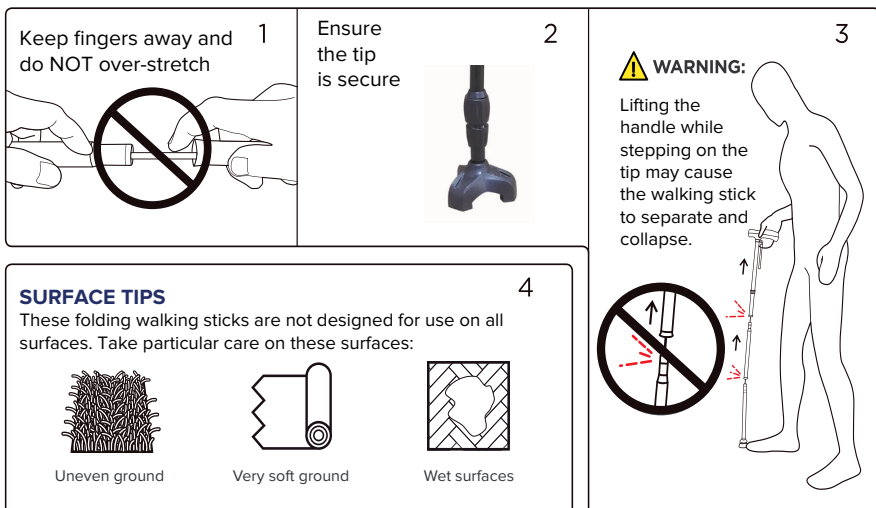


## SETUP



Images for illustration purposes only.

## SAFETY PRECAUTIONS



# MAINTENANCE

- Check the elastic cord before every use. Do not use the cane if the cord is cut, frayed, or damaged.
- Check the handles and tip are secure.
- Periodically check the wrist strap to ensure that it is secure.
- Replace the tips every six months. Contact Drive DeVilbiss Healthcare Ltd using the tip code below, or contact your local distributor to purchase new tips.
- Clean the cane occasionally using water and a mild detergent.

## Features

- Aluminium cane material
- Height adjustable in 2.5 cm (1") increments
- Folds into 4 parts for easy storage
- Hard-wearing, non-slip tip
- Easy to wipe clean

## Comments, Feedback, or Questions

For assistance with using your folding cane or for any warranty, sales or customer service information, please contact your distributor or retailer. If in doubt, contact Drive DeVilbiss Healthcare Ltd.

If a serious incident occurs in relation to the product, reports should be forwarded to the manufacturer and the MHRA or local competent authority.

# SPECIFICATIONS

Product Code: RTL10320TH

Description: Twin-Handled Walking Stick

Main Handle Height: 84 - 94cm (33" - 37")

Lower Handle Height: 64- 74cm (25" - 29")

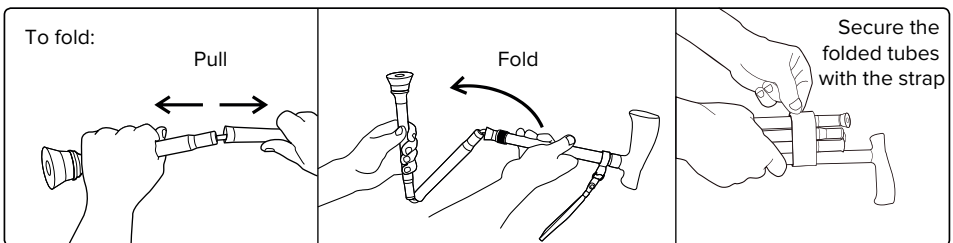
Maximum User Mass: 130kg (20.5st)

Tip Code: RTL10320TIP

The walking stick has a sprung tip to help absorb vibrations.

Both handles must be used together when the walking stick is used to provide support when the user is standing from a seated position.

# STORAGE INSTRUCTIONS



When the product has come to the end of its useful life, follow local recycling and disposal policies.



Com-Da Healthcare Co. Ltd,  
No. 1, Jinzhao Street, West District,  
Zhongshan City, Guangdong, CN



Drive DeVilbiss Healthcare Ltd.,  
Sidhil Business Park, Holmfield, Halifax,  
West Yorkshire, HX2 9TN, Great Britain  
+44 (0) 845 0600 333

info@drivedevilbiss.co.uk www.drivedevilbiss.co.uk



Osmunda Medical Technology Service GmbH  
Treskowallee 108, 10318 Berlin, DE

Drive DeVilbiss Sidhil Ltd.,  
4 Trench Road, Mallusk, Newtownabbey,  
BT36 4TY, Northern Ireland